



The Phoenix Band and Colorguard Booster Welcomes you and thanks you for participating in the Firebird Fantasy. We are excited to get the kids back to performing with a live audience. Please review the information included in this packet with your staff and parents prior to your arrival.

**Event Date:** Saturday, January 29, 2022

**Gym Doors Open:** 2:30 PM

**Event Time:** 3:00 PM

**Concessions:** Open at 2 PM We will have food that can be taken to go if you wish to eat on the road or in your homerooms.

**Ticket Prices:** Both shows \$8.00, Seniors: \$5.00, 5 and under free, One show \$5.00, Seniors: \$3.00, 5 and under free.

**Spectators:** will be asked to sit 3 feet apart unless they are from the same family

**Program:** \$2.00

**Mask and Social Spacing:** Masks are **required** in school buildings.

**Check in:** A Phoenix Host will meet each participating guard upon arrival/check in. Please have your Crew Sign-in sheet with you. You will receive your room assignment and be escorted to your room at that time. Guard members, chaperones, instructors, and those on the crew sign-in sheet will be given a wrist band and allowed in the homeroom area. An adult representative of your group must sign the Homeroom Agreement. Spectators will not be allowed in the homerooms. Please leave your room the way that you found it and please review this detail with your parents and staff so we don't encounter any issues.

#### **Covid Protocol Updates:**

- If another guard is unloading when you arrive, please wait until they have entered the building and completed their check in before you enter.
- Guards will be assigned a classroom, or 2, at the show. We will be making every effort to keep teams spread out as much as possible.
- PLEASE be aware when stretching the hallway that you need to social distance.
- We ask that performers only be in the gymnasium during their performance. Teams are permitted to eat, socially distanced in the cafeteria **OR** in their classrooms. We will have a live video feed to the cafeteria **AND** the classrooms
- Only spectators will be allowed in the gymnasium
  - Staff and Crew may view units from the designated area on the track
  - We will make exceptions for sister guards who may enter the gym **ONLY** to watch their sister team and then must leave.
- We will hold 2 full retreats so units may leave after the first half if they wish, though we understand some units may need to leave after they perform.

**Admission for Unit Members and Personnel:** In an effort to introduce an extra sanitary and allergy measure we will NOT be using handstamps. All units will receive wristbands upon arrival for each Unit Member, Staff, Chaperone and Crew.

**Equipment Trucks and Buses:** Please proceed to the Front side of EJD middle school, where you will be instructed on where to park

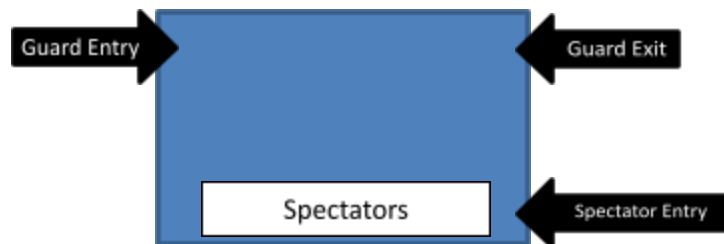
**Gender Neutral Restrooms and Changing:** There will be a gender neutral lavatory available near the guard entry area of the school.

**Sound:** Sound check will be pre show & during break between 1st and 2nd show, sound by Great Music Company. Please have all show music labeled with your guard name. You can pick up your music after your guard performs.

**Video: THE MID-YORK COLOR GUARD CIRCUIT PROHIBITS THE VIDEOTAPING OF ANY COLORGUARD PERFORMANCE DUE TO COPYRIGHT LAWS.**

**Warm Up/Gate/Performance Times:** Please see the attached Schedule for your assigned warm up area, times, and the performance time that was determined by Mid York CGC. A Phoenix Host will escort you to your warm up area and to the staging area at the proper time. Phoenix is fortunate to be able to provide both body and equipment warm-up in the same warm-up gym.

**Performance Entrance and Exit:** The Guards Entrance and Exit are marked on the diagram below. To facilitate guard quickly and safely entering and exiting the gym, please follow the



Gate Keeper's instructions. Following the performance your band will exit to the rear of the gym.

**Mandatory Floor Snaking:** As per MYCGC directive, all guard units are to "snake" their floors out of the gym following their performance. There will be a floor "neatening" area in the hallway just outside the performance gym. Guards are expected to move quickly through the floor neatening area.

**In case of emergency:** Announcements regarding the exits will be made throughout the show and emergency exits backstage will be marked and free from obstructions.

**Retreat:** Units (full) retreat will be held following the conclusion of the final guard's performance. Units are requested to assemble in the hallway to the guard entrance, in performance order, at the beginning of the final performance. An announcement will be made. We are choosing to do a full retreat to allow social space for all in the gym.

**Judges' Commentary and Recap:** Class recaps will be available before critique. Judges commentary will be available through Competition Suite.

**Critique:** Critique will take place immediately following the final guard's performance. Per the fall MYCGC meeting, critique order will be in **performance order**. If you wish to go in an earlier round you must submit a written request to the show host. Please be sure to have your Critique Sheet completed.

**Action items:**

- **Fill out the Phoenix Firebird Fantasy 2022 information form and submit**
- **Submit unit photo or write up for show program**
- **Contact show host with special request for large props or storage during the show**
- **Contact show with host special request for post contest order (long distance consideration only)**

We hope you enjoy your visit to Phoenix and look forward to seeing your unit perform! If you have any questions please contact us.

Thank You!

Show Coordinator: Pam Southworth

(315) 427-9163 or [pjsouthworth@gmail.com](mailto:pjsouthworth@gmail.com) or [marchingartsshow@phxbacboosters.org](mailto:marchingartsshow@phxbacboosters.org)

Phoenix Winterguard Director: Des Moore

315-491-4231 or [DMoore@phoenixcsd.org](mailto:DMoore@phoenixcsd.org)

## **Directions**

### **From the West:**

- Take the Thruway to Exit 38 [Rt. 57, Liverpool] (it's easier than getting off at Exit 39).
- Turn left (north) onto Route 57. Proceed about 10 miles north into the Village of Phoenix.
- Turn right at the traffic light onto Route 264.
- The Middle School is just past the train tracks on the right.

### **From the East:**

- Take the Thruway to Exit 34A [Rt 481, Syracuse/Oswego]
- Take Rt 481 North, by bearing right at the fork and heading north toward Oswego.
- Go to Exit 14, Rt. 264 Phoenix.
- Turn left at the top of the exit ramp.
- EJ Dillon Middle School is about  $\frac{3}{4}$  mile on the left.

### **From the South:**

- Take Rt. 81 to Rt. 481 North.
- Stay on 481 North to Exit 14, Rt. 264 Phoenix.
- Turn left at the top of the exit.
- EJ Dillon Middle School is about  $\frac{3}{4}$  mile on the left.

### **From the North:**

- Take 481 South to Exit 14, Rt. 264 Phoenix.
- Turn right at the top of the ramp.
- EJ Dillon Middle School is about  $\frac{3}{4}$  mile on the left.

## **Staff and Spectator Parking:**

*We have lots across the district for Spectator Parking. See the map on the next page for details.  
We will be using lots #1, #2, & #3a. Lots #3b & #3c will only be used if all others are full.*

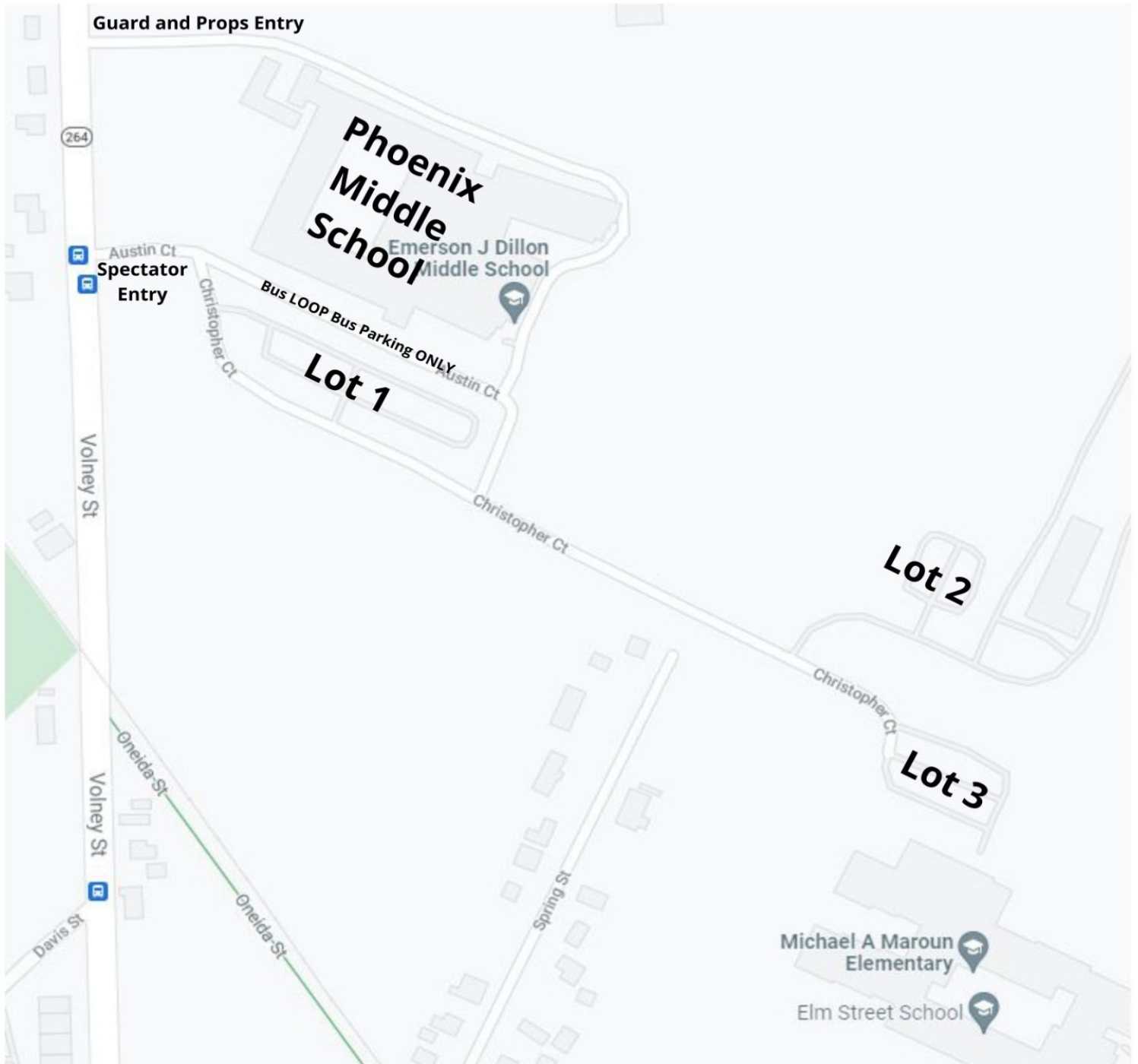
- GPS Address = 116 Volney Street, Phoenix, NY 13135
- Please follow directions of the parking attendants

### **Unit Bus, Equipment Trucks**

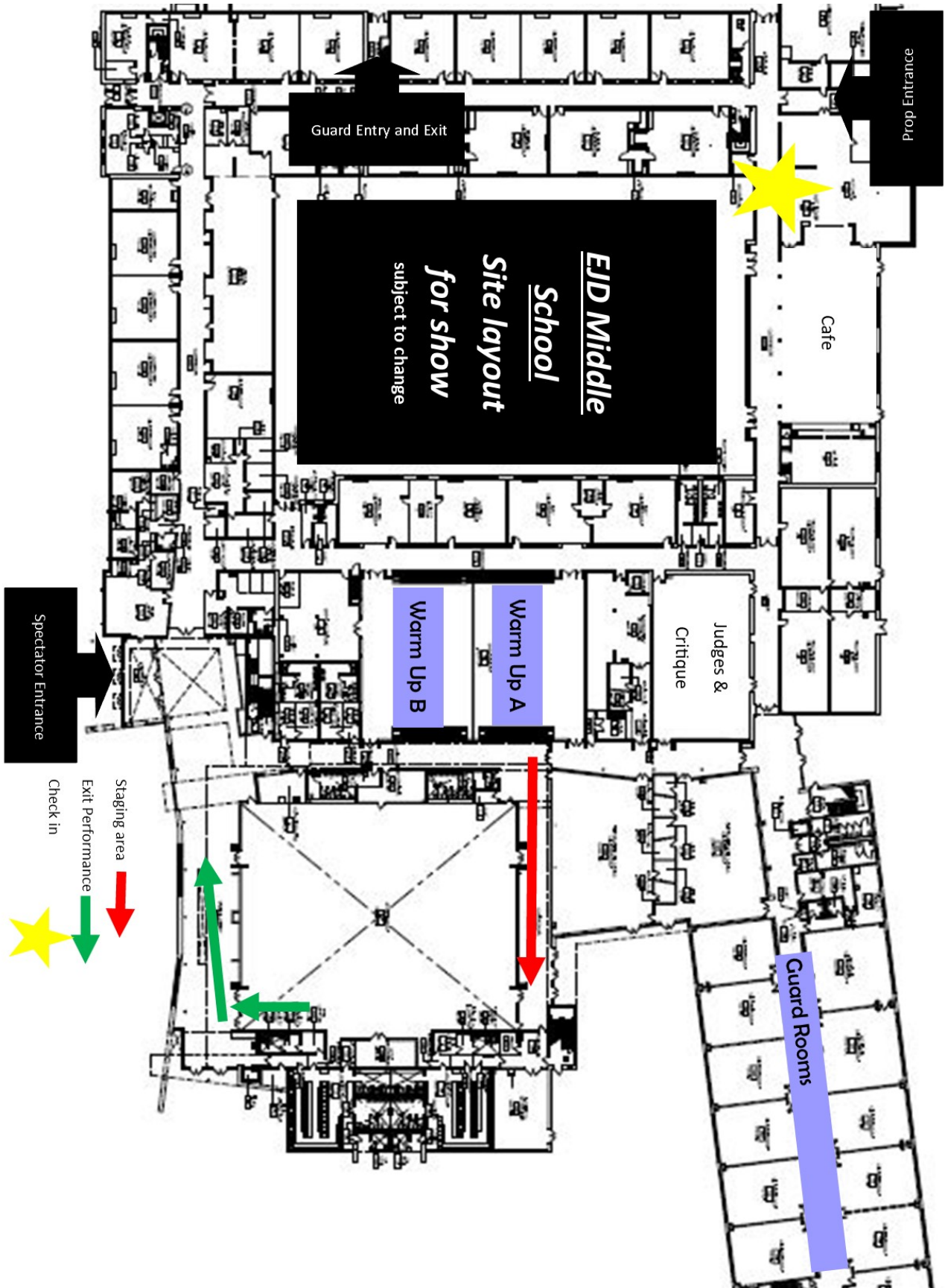
Buses, Equipment Trucks, will park in the bus loop at the Middle school unless directed otherwise by the parking staff.

*Middle school. GPS Address = 116 Volney Street, Phoenix, NY 13135*

# Parking Map for Firebird Fantasy



# Building layout for Show



Guard	Class	Gym	Warm-up start	Warm-up end	Travel	Perform Start	Perform End
Nat.Anthem / Announcement			<b>Body &amp; Equipment</b>			3:00	
Phoenix Color Guard Club	Exh.	A	2:44	3:00	5 min.	3:05	3:13
Phoenix ERA	ERA	B	2:52	3:08	5 min.	3:13	3:21
Vestal Cadet	Cadet	A	3:00	3:16	5 min.	3:21	3:29
Jordan -Elbridge JV	Cadet	B	3:08	3:24	5 min.	3:29	3:37
Vestal	SRA	A	3:16	3:32	5 min.	3:37	3:45
Oswego	SRA	B	3:24	3:40	5 min.	3:45	3:53
Phoenix Junior	SRA	A	3:32	3:48	5 min.	3:53	4:01
Horseheads	SRA	B	3:40	3:56	5 min.	4:01	4:09
Baldwinsville JV	SRA	A	3:48	4:04	5 min.	4:09	4:17
ESM JV	SRA	B	3:56	4:12	5 min.	4:17	4:25
Retreat – Units (full) retreat line up in the guard entry hall						4:25	
<b>Prepare Gym for 2nd Show</b>							
Guard	Class	Gym	Warm-up start	Warm-up end		Perform Start	Perform End
CNS Northstars JV	SA-3	A	5:07	5:25	5 min.	5:30	5:39
Baldwinsville Varsity	SA-2	B	5:16	5:34	5 min.	5:39	5:48
Jordan-Elbridge Varsity	SA-2	A	5:25	5:43	5 min.	5:48	5:57
Phoenix Senior	SA-1	B	5:34	5:52	5 min.	5:57	6:06
Liverpool Varsity	SA-1	A	5:43	6:01	5 min.	6:06	6:15
ESM Varsity	SA-1	B	5:52	6:10	5 min.	6:15	6:24
<b>10 minute Judge's Break</b>							
CNS Northstars Varsity	SO	A	6:09	6:29	5 min.	6:34	6:44
Central Square Varsity	SO	B	6:19	6:39	5 min.	6:44	6:54
Phoenix Indoor Percussion	Exh.	Band Room	6:29	6:49	5 min.	6:54	7:04
Senior Recognition Phoenix						7:05	
Retreat – Units (full) retreat line up in the guard entry hall						7:15	

## Phoenix Firebird Fantasy 2020 information form

**This form or electronic submission must be received by 1/20/2022.**

<https://forms.gle/KeWhYYm5QehmSqQ3A>



**This information will be used to contact you with questions, show updates in case of weather, awards, program and announcements.**

(guards not returning this form by the deadline will have all information used according to information supplied to Mid-York Color guard Circuit)

Guard Name	
Class	
Program Title	
Director	
Contact Name	
Email Address	
Cell Phone	
Number of Members	
Number of Staff	
Props (other than floor)	

You may email program information to [pjsouthworth@gmail.com](mailto:pjsouthworth@gmail.com)